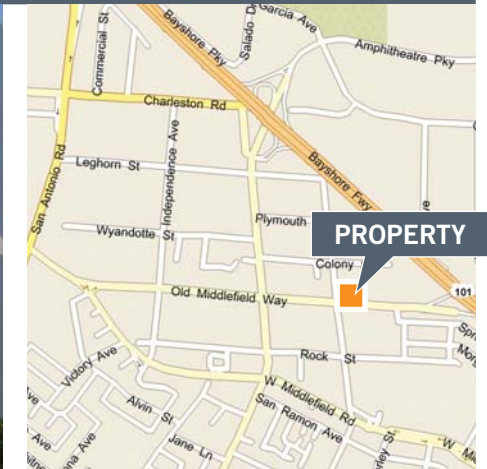


1916-1920 Old Middlefield Way

Mountain View, California



PLUG-N-PLAY

FOR LEASE

R&D Space

1916-B: ±6,352 sq. ft. Available Now

1920: ±5,005 sq. ft. Available Now

The Mozart
Development
Company

Property Highlights:

- Three Free Standing Buildings
- Office / R&D / Lab
- Abundant Natural Light
- 4/1,000 Parking
- 100% HVAC
- Fiber Available in 1916
- Grade Level Truck Doors
- Great Access to Highways 101 & 85
- Multiple Nearby Amenities
- Flexible Lease Term

For more information, contact:

Kelly Yoder
Associate
408-615-3427
kelly.yoder@ctbt.com
LIC #01821117

Colin Feichtmeir
Senior Vice President
408-615-3443
colin.feichtmeir@ctbt.com
LIC #01298061

Steve Horton
Partner
408-615-3412
steve.horton@ctbt.com
LIC #01127340

300 Santana Row, Fifth Floor
San Jose, California 95128

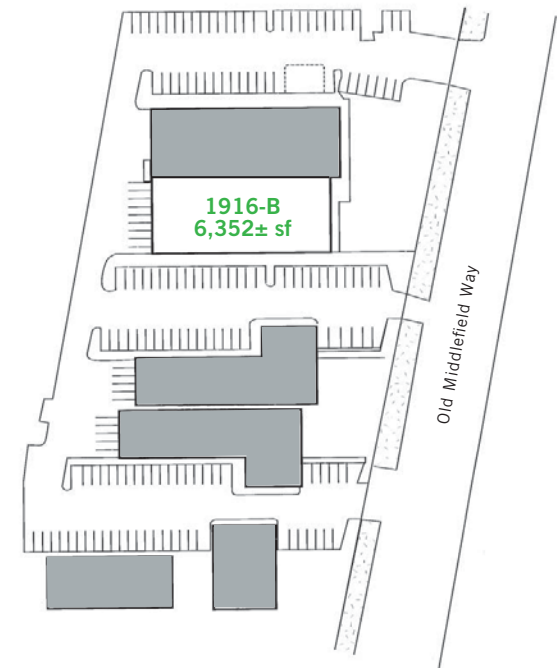
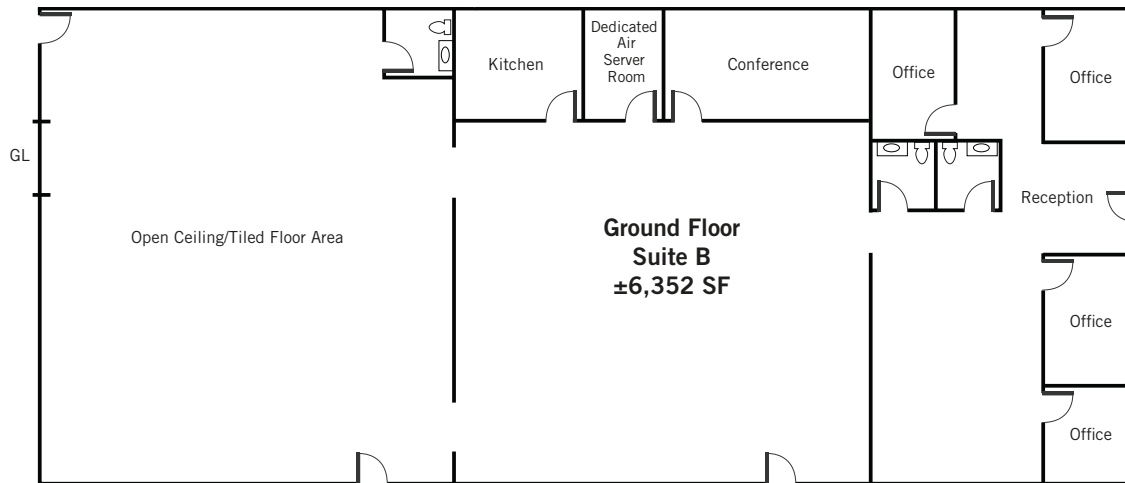
ph: (408) 615-3400

fx: (408) 615-3444

Cassidy Turley Northern California
www.ctbt.com

1916 Old Middlefield Way

Mountain View, California



For more information, please contact:

Kelly Yoder
Associate
408-615-3427
kelly.yoder@ctbt.com
LIC #01821117

Colin Feichtmeir
Senior Vice President
408-615-3443
colin.feichtmeir@ctbt.com
LIC #01298061

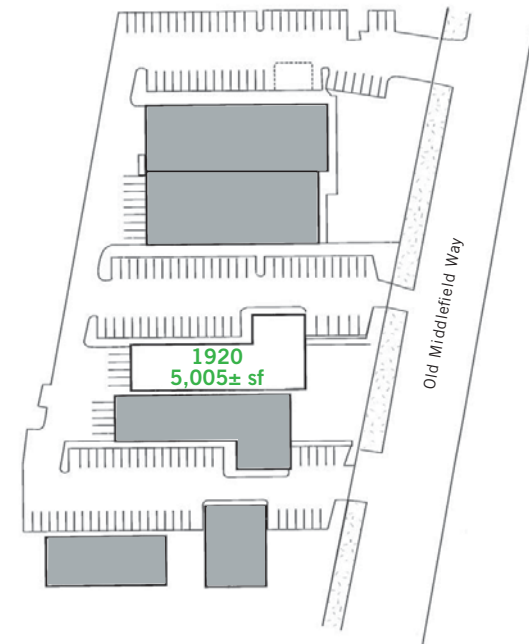
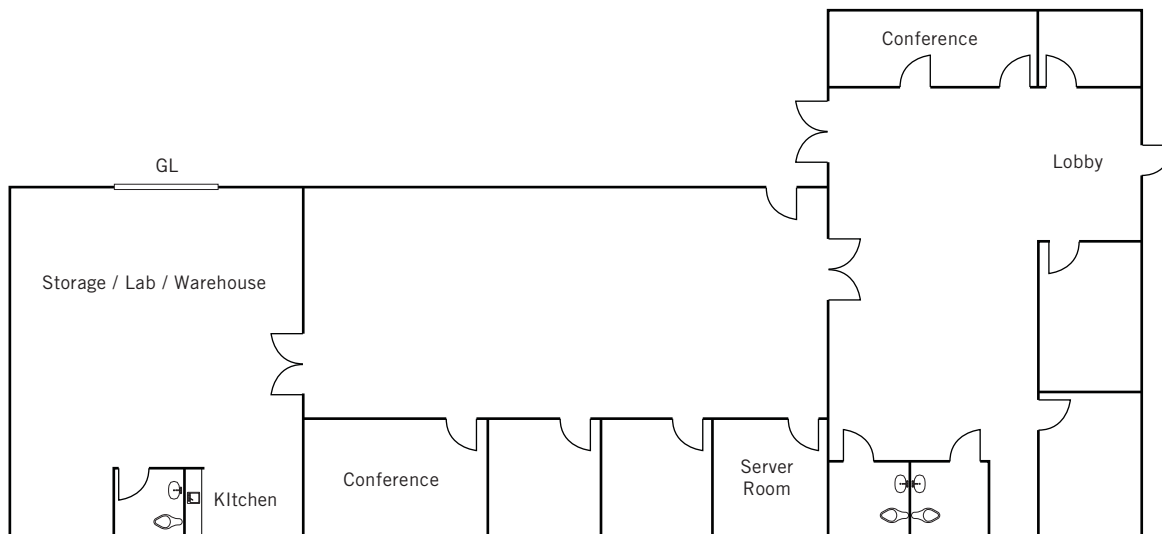
Steve Horton
Partner
408-615-3412
steve.horton@ctbt.com
LIC #01127340

300 Santana Row, Fifth Floor
San Jose, California 95128
ph: (408) 615-3400
fx: (408) 615-3444

www.ctbt.com

1920 Old Middlefield Way

Mountain View, California



For more information, please contact:

Kelly Yoder
Associate
408-615-3427
kelly.yoder@ctbt.com
LIC #01821117

Colin Feichtmeir
Senior Vice President
408-615-3443
colin.feichtmeir@ctbt.com
LIC #01298061

Steve Horton
Partner
408-615-3412
steve.horton@ctbt.com
LIC #01127340

300 Santana Row, Fifth Floor
San Jose, California 95128
ph: (408) 615-3400
fx: (408) 615-3444

www.ctbt.com

1916-1920 Old Middlefield Way

Mountain View, California

- Shoreline @ Stierlin
1. Chapala Mexican
 2. Safeway
 3. Round Table Pizza
 4. Jack-in-the-Box

- Shoreline @ Terra Bella
5. Taco Bell

- Shoreline @ 101
6. Century Cinemas
 7. Togo's
 8. Gold's Gym
 9. Quasar Laser Tag

- Shoreline @ Pear Avenue
10. Starbucks
 11. Quizno's
 12. 7-11

- Downtown Mountain View
13. Frankie Johnny Luigi Pizza
 14. Starbucks
 15. Wells Fargo
 16. Amici's Pizza
 17. LeBoulangier
 18. Bank of the West
 19. Kirin Chinese
 20. Bean Scene Cafe
 21. Kapp's Bar & Grill
 22. Scott's Cantankerous Fish
 23. New Chinese Delight
 24. Mountain View Market
 25. Shavras Indian
 26. Tea Eva
 27. Molly McGee's
 28. Fiesta Del Mar
 29. Washington Mutual
 30. Subway

- El Camino @ 237
31. Nob Hill Foods
 32. Lucky Chinese Restaurant
 33. In & Out
 34. Circuit City
 35. Radio Shack
 36. Erik's Deli
 37. Blockbuster
 38. Longs Drugs
 39. Chevron
 40. Shell
 41. Unical 76
 42. Burger King
 43. BevMo
 44. Round Table Pizza

- El Camino @ Bernardo
45. Safeway
 46. Arby's
 47. McDonalds
 48. Carl's Jr.
 49. Round Table Pizza
 50. Casa Lupe
 51. Longs Drugs
 52. Pizza Hut
 53. Wells Fargo

- Whisman @ Middlefield
54. 7 Eleven
 55. Subway
 56. Carl's Jr.
 57. Butler Mart
 58. Valero Gas

- 645 Ellis
59. Specialties Bakery / Peet's Coffee
 60. Symantec Cafeteria (Public)

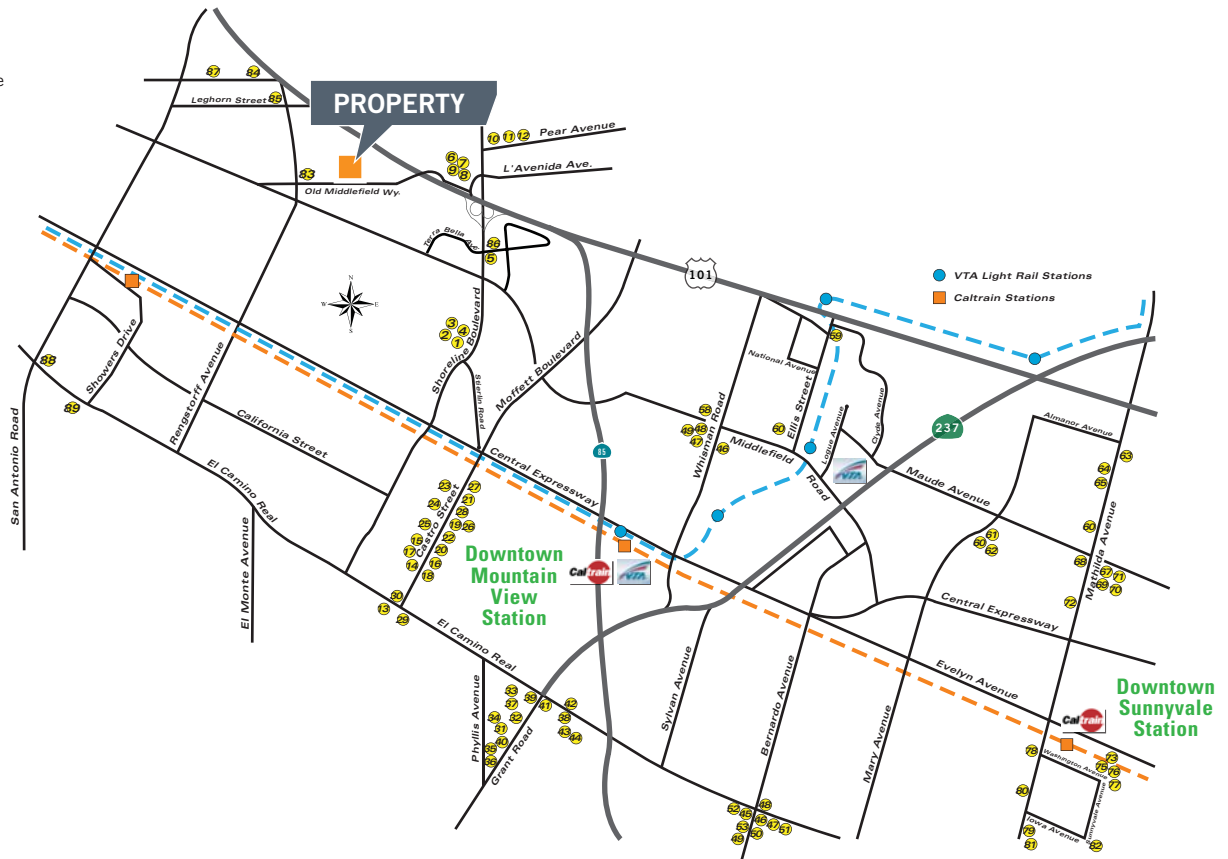
- Mary @ Corte Madera
60. Subway
 61. Fu-Jung
 62. Round Table Pizza

- Mathilda
63. Hobbies
 64. Motel 6
 65. Burger King
 66. McDonalds
 67. Albertsons
 68. Wendys
 69. Starbucks
 70. Pizza Hut
 71. KFC
 72. LeBoulangier

- Downtown Sunnyvale
73. Round Table Pizza
 74. Fibber McGee's
 75. Gumba's Cafe
 76. Rokko
 77. Off the Hookah
 78. Wells Fargo
 79. Bank of the West
 80. Denny's
 81. Washington Mutual
 82. Target

- Rengstorff @ 101
83. La Castana
 83. La Bamba
 84. Chapotle
 84. Best Buy
 84. Starbucks
 84. REI
 84. Hawaiian BBQ
 85. In & Out Burger
 85. Costco
 85. McDonalds
 85. Krispy Cream
 85. Office Max
 85. Pet Club
 85. Lee's Comics
 86. Fiesta Del Mar
 87. Fred's Dog House

- El Camino Real and San Antonio
88. Sears
 88. 24 Hour Fitness
 88. Chili's
 88. Fresh Cho ice
 88. Bueno Bueno
 89. Whole Foods



For more information, please contact:

Kelly Yoder
Associate
408-615-3427
kelly.yoder@ctbt.com
LIC #01821117

Colin Feichtmeir
Senior Vice President
408-615-3443
colin.feichtmeir@ctbt.com
LIC #01298061

Steve Horton
Partner
408-615-3412
steve.horton@ctbt.com
LIC #01127340

300 Santana Row, Fifth Floor
San Jose, California 95128
ph: (408) 615-3400
fx: (408) 615-3444

www.ctbt.com